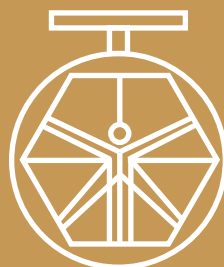


**GROUP 200
GATE VALVES
MOD. 200A/09**



**DAVINCI
VALVES™**

TECHNICAL DATA SHEET

WATER Series

**RESILIENT SEAT GATE VALVES
NON RISING STEM FLANGED END**

**DAVINCI
VALVES™**



**QUALITY
ASSUREMENT**

**DAVINCI
VALVES™**



**PRODUCT QT
ASSUREMENT**

**DAVINCI
VALVES™**



**COMPANY QT
ASSUREMENT**

www.davincivalves.com

18 Dongyu Street, Square One,
11th Floor 1101, Jinjiang District,
Chengdu, Sichuan CHINA

10F/Tower A, Billion Center,
1 Wang Kwong Road, Kowloon Bay
Kowloon HONG KONG

RESILIENT SEAT GATE VALVE NON-RISING STEM F4

Ref.200A / PN 10-16

APPLICATION:

Potable water distribution and pumping,
sewage, irrigation

STANDARDS:

Design: DIN 3352.

Manufacture according to: EN 1074-
2./GB/T12232-1989

Face to Face: EN 558-1 Serie 14.

Mounting between flanges: PN10/16 EN 1092-2,
ISO 7005-2.

Pressure Test: EN 12266-1 Rate A. GB/T13927-
1992

Body: 24 bars. Seat: 17,6 bars.

EU directive 2014/68/EU: Products excluded,
article 1, § 2b up to ND300. Risk Category I MoD.
A from ND350 to ND600

EPDM according to UNE -EN 681-1:1996

PTFE according to UNE-EN 13000-1:2006

GENERAL CHARACTERISTICS:

Range from ND40 up to ND1200.

WRAS certificate for Drinking Water (Rubber and paint)

Complies according the norm EN 1074-2

Full bore.

100% Tightness in both ways.

Minimum head loss.

Repackable under pipeline pressure.

Low torque values.

Epoxy paint 250 microns: RAL 5015.

WORKING CONDITIONS:

Size Range: DN50~DN600mm

Pressure Ratings: 1.0Mpa; 1.6Mpa; 2.5Mpa

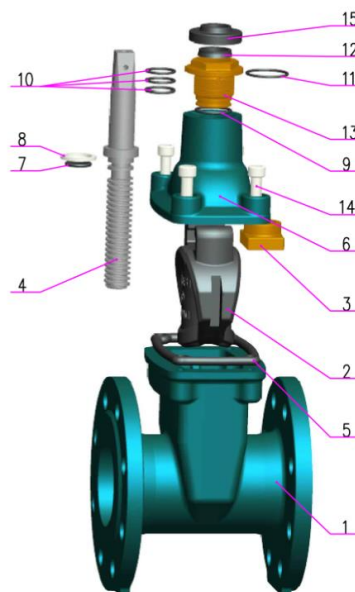
Working Temperature: -10C +80C

Suitable Media: Water

End connection: PN 10/ PN 16/ PN 25

Consult Factory for other applications

Nº	ITEM	MATERIAL
1	BODY	QT500-7
2	GATE	QT500-7/EPDM
3	NUT	ZCuZn38
4	SHAFT	2Cr13
5	BODY-BONNET GASKET	EPDM
6	BONNET	QT500-7
7	ORING	EPDM
8	PACKING	PTFE
9	O-RINGS	EPDM
10	SHAFT-NET O-RINGS	NBR
11	O-RINGS	EPDM
12	DUST COVER	NBR
13	GLAND NUT	HPb59-1
14	BOLTS	A2
15	DUST PROTECTOR	NBR



All the components can be substituted with equivalent or higher-class materials.

DAVINCI VALVES LTD, is constantly looking at all ways of improving our products and services related to the water, fire and industry sector and therefore we reserve the right to change, without prior notice, any of the data contained here. Please contact our Technical Sales Department for detailed advice.

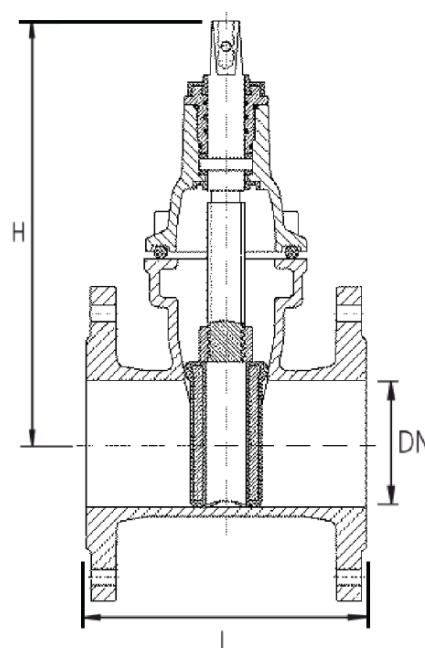
© 2018 DAVINCI VALVES LTD.

www.davincivalves.com info@davincivalves.com +34 616553797 / +86 17340168233
18 Dongyu Street, Square One 11th Floor 1101. Jinjiang District, Chengdu, Sichuan Province, China

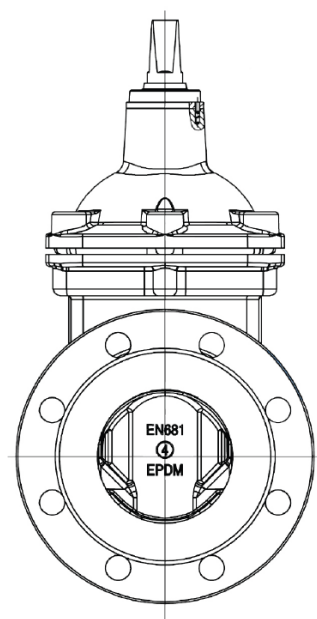
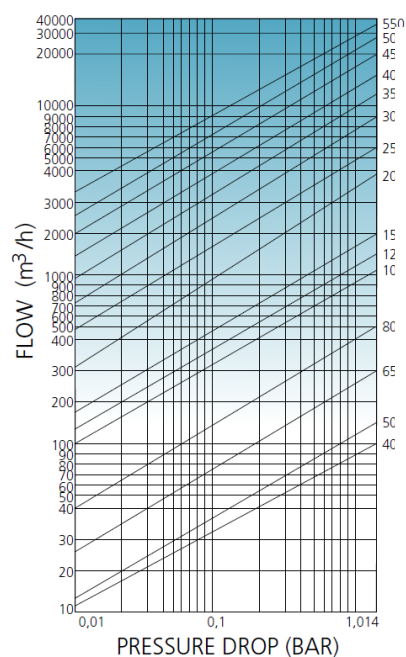
RESILIENT SEAT GATE VALVE NON-RISING STEM F4

Ref.200A / PN 10-16

ND	L F4	L F5	H	Torque (N.m)	Weight KG
40	140	240	205	40	9,5
50	150	250	218	50	10,6
65	170	270	255	60	11
80	180	280	277	60	12,6
100	190	300	325	80	18
125	200	325	355	100	26,9
150	210	350	395	120	30,2
200	230	400	482	150	53
250	250	450	572	200	73,5
300	270	500	662	250	107,4
350	290	550	830	300	158,4
400	310	600	915	350	200,8
450	330	650	950	400	290
500	350	700	1000	450	344
600	390	800	1050	550	543



FLOW CHARACTERISTIC CHARTS



All the components can be substituted with equivalent or higher-class materials.

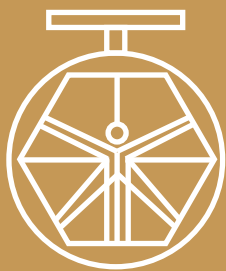
DAVINCI VALVES LTD, is constantly looking at all ways of improving our products and services related to the water, fire and industry sector and therefore we reserve the right to change, without prior notice, any of the data contained here. Please contact our Technical Sales Department for detailed advice.

© 2018 DAVINCI VALVES LTD.

www.davincivalves.com info@davincivalves.com +34 616553797 / +86 17340168233

18 Dongyu Street, Square One 11th Floor 1101. Jinjiang District, Chengdu, Sichuan Province, China

"For professionals who wants more"



DAVINCI
VALVES™